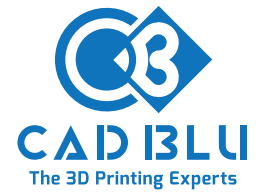


# ProJet® MJP 2500 Plus (Dental)

High throughput productivity MultiJet Printing  
of precision wax-ups, models and surgical guides



The newest member of the ProJet family, the MJP 2500 Plus is the most affordable MJP printer for dental applications, offering higher fidelity and more accurate prints than other printers costing up to ten times more.

## PROFESSIONAL PRODUCTIVITY

High speed, low cost productivity for precision stone-like dental models

## AFFORDABLE

Low cost, entry level solution for small dental labs/offices

## ACCURATE

±50µm on 80% of global surfaces (clinical fit)

## FUNCTIONAL

Hard, low friction surfaces for easy prep insert and removal

## FAST, LOW LABOR WORKFLOW

Sparse, 40% dense supports for less support consumption

## FLEXIBLE PRINTING

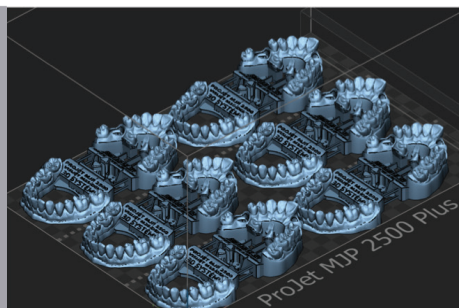
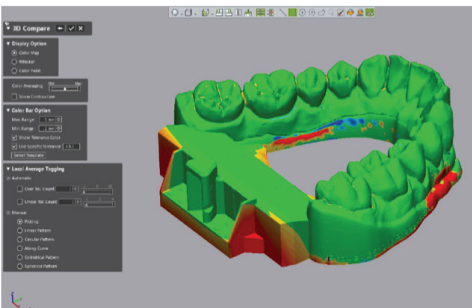
3hr (single lane) or 8 hr (full platform) for versatile workflows



Visijet M2R-TN -  
Stone-like rigid plastic



Visijet M2R-CL



**New York**  
212.481.8700  
37 W 28thSt., 9th Floor  
New York, NY 10001 USA

**California**  
818.303.1766  
64 West Bellevue Drive  
Pasadena, CA 91105

**Colorado**  
970.314.9772  
562 W. Crete Suite 105  
Grand Junction, CO 81505

**Massachusetts**  
978.710.0002  
491 Dutton Street  
Lowell, MA 01854

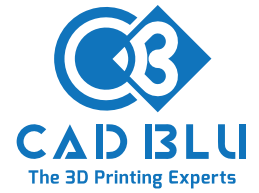
**Oregon**  
971.808.0050  
4800 SW Macadam Ave,  
Suite 320,  
Portland, OR 97239

[www.cadblu.com](http://www.cadblu.com) | [info@cadblu.com](mailto:info@cadblu.com)

Warranty/Disclaimer: The performance characteristics of these products may vary according to product application, operating conditions, material, combined with end use. CAD BLU makes no warranties of any type, express or implied, including, but not limited to, the warranties of the merchantability or fitness for a particular use. ©2018 by CAD BLU, Inc. All rights reserved. Specifications subject to change without notice. ProJet and the 3D Systems logo are registered trademarks of 3D Systems, Inc.

# ProJet® MJP 2500 Plus (Dental)

Print precision dental models in your office



<b>Printing Modes</b> HD Mode UHD Mode HDX Mode HDP Mode	High Definition
<b>Net Build Volume</b> (xyz)*	11.6 x 8.3 x 5.6 in (295 x 211 x 142 mm)
<b>Resolution</b> (xyz) HD Mode UHD Mode HDX Mode HDP Mode	800 x 900 x 790 DPI; 32 μ layers
<b>Accuracy (typical) of part dimension</b>	±0.004 inch per inch (±0.1016 mm per 25.4 mm) Accuracy may vary depending on build parameters, part geometry and size, part orientation, and post-processing.
<b>Build Materials</b> HD Mode UHD Mode HDX Mode HDP Mode	VisiJet M2R-TN** – Rigid Tan VisiJet M2R-TN** – Rigid Tan
<b>Support Material</b>	VisiJet M2 SUP
<b>Material Packaging</b>	Build materials: In clean 3.30 lbs (1.5 kg) bottles (printer holds up to 2 build materials bottles with auto-switching) Support materials: In clean 3.08 lbs (1.4 kg) bottles (printer holds up to 2 support material bottles with auto-switching)
<b>Electrical</b>	100-127 VAC, 50/60 Hz, single-phase, 15A 200-240 VAC, 50 Hz, single-phase, 10A Single C14 receptacle
<b>Dimensions (WxDxH)</b> 3D Printer Crated 3D Printer Uncrated	55 x 36.5 x 51.7 in (1397 x 927 x 1314 mm) 44.1 x 29.1 x 42.1 in (1120 x 740 x 1070 mm)
<b>Weight</b> 3D Printer Crated 3D Printer Uncrated	716 lb (325 kg) 465 lb (211 kg)
<b>3D Sprint™ Software</b>	Easy build job set-up, submission and job queue management; Automatic part placement and build optimization tools; Part stacking and nesting capability; Extensive part editing tools; Automatic support generation; Job statistics reporting tools
<b>E-mail Notice Capability</b>	Yes
<b>Internal Hard Drive Capacity</b>	500 Gb minimum
<b>Connectivity</b>	Network ready with 10/100/1000 BaseT Ethernet interface USB port
<b>Client Hardware Recommendation</b>	CPU: 3 GHz multiple core processor (2 GHz Intel® or AMD processor mini) with 8 GB RAM or more (4 GB mini), OpenGL 3.2 and GLSL 1.50 support (OpenGL 2.1 and GLSL 1.20 mini) RAM: 1 GB video or more, 1280 x 1024 (1280 x 960 mini) screen resolution or higher HARD DRIVE: SSD or 10,000 RPM hard disk drive (30 GB of available hard-disk space for cache mini) OTHER: Google Chrome or Internet Explorer 11 (Internet Explorer 9 mini), Microsoft .NET Framework 4.5 installed with application
<b>Client Operating System</b>	Windows 7, Windows 8 or Windows 8.1 (Service Pack)
<b>Input Data File Formats Supported</b>	STL, CTL, OBJ, PLY, ZPR, ZBD, AMF, WRL, 3DS, FBX, IGES, IGS, STEP, STP, MJPDDD
<b>Post-Processing</b>	MJP EasyClean System for removal of wax supports
<b>Operating Temperature Range</b>	64-82 °F (18-28 °C), reduced print speed at > 77 °F (25 °C)
<b>Operating Humidity</b>	30-70 % Relative Humidity
<b>Noise</b>	< 65 dBA estimated (at medium fan setting)
<b>5-Year Printhead Warranty</b>	Optional
<b>Certifications</b>	CE